

# Climatic chamber CLIMAX 100, 120, 150, 200 TOUCH



Climax 100 Touch



Climax 120 Touch



Climax 150 Touch



Climax 200 Touch

## Characteristics

<b>Display</b>	7" Touch screen display
<b>Structure and Insulation</b>	Sanitized pre-coated steel with bacteriostatic activity, white color- in/out (rust- corrosion-proof material); insulation polyurethane thickness 40 mm
<b>Door</b>	Two glass doors with triple glass panels
<b>Light</b>	Led type with adjustable brightness
<b>Controller</b>	ECT-F TOUCH
<b>Castors/feet</b>	100/120/150 have small castors and stabilizing feet and 200 has adjustable feet
<b>Alarms</b>	Acoustic and Visual for temperature deviations and failures, with automatic recording
<b>Data and Event recording</b>	10 years on SD card; last year on Flash-memory
<b>Temperature Graph</b>	A customizable real time graphic always visible from the home page
<b>Connectivity</b>	USB-SD-SIM port with frontal access ; Dry Contact; Serial ports RS485 and RJ45
<b>Temperature range</b>	20°C - 24°C
<b>Battery</b>	Rechargeable NiMh back-up batteries
<b>Refrigeration Type</b>	Forced-air, ventilated
<b>Defrost</b>	Automatic with automatic evaporation of the condensate water

## TOUCH SCREEN HOME PAGE

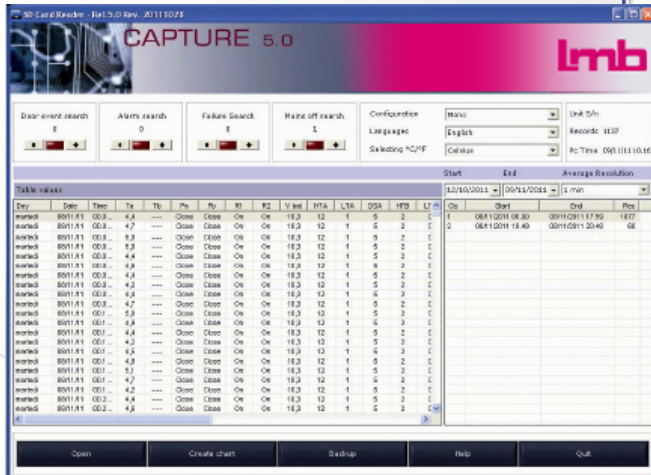
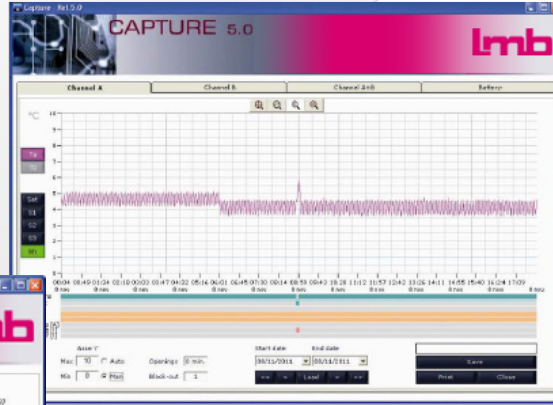
- Internal chamber temperature
- Status of the equipment (cooling, pause..)
- Pre-set Set point
- High temperature –Low temperature pre-set limits
- Instant power consumptions values
- Mains power level
- Real time graph of the refrigerator temperatures, customizable, to display up to three probes at the same time (probes: Ect-f controller, evaporator, condenser, and, if present, humidity probe; additional probe or product temperature simulation probe if Dmlp Touch is fitted)



# Climatic chamber CLIMAX 100, 120, 150, 200 TOUCH

## Software

- Software upgrade thanks to the USB frontal slot
- Capture 5.0 software: available into the SD Card for a quick reading of the recorded data and creation of customizable daily or weekly graphs



## Materials

- Enhanced insulation thickness. Environment friendly polyurethane foam, water based foaming
- External structure in pre-coated antibacterial sheet steel
- Internal structure stainless steel (100, 120); sanitized pre-coated steel with bacteriostatic activity, white color (150, 200 – opt.stainless steel)
- LED light (white color; blue light when Night and Day function is activated)
- Solid doors fitted with an integrated ergonomic anodized aluminum for a perfect grip
- Improved components featuring better performance and reduced power consumption
- Easier access to the condenser room (the cleaning of the condenser is now simpler for the end-user)
- Easier access to the technical compartment for service



Technical data	CLIMAX 100 TOUCH	CLIMAX 120 TOUCH	CLIMAX 150 TOUCH	CLIMAX 200 TOUCH
External dimensions LxDxH (cm)	60,5 x 61 x 86,5	121 x 71 x 87,5	72 x 76 x 214	144 x 82,5 x 207
Internal dimensions LxDxH (cm)	52,5 x 39,5 x 48	106,1 x 55,9 x 46,5	60 x 58,2 x 150	130 x 69 x 151
Capacity (Agitator)	1 x 24/48/60	2 x 24/48/60/60A or 1 x 96/96A	3 x 24/48/60/60A	6 x 24/48/60/60A or 3 x 96/96A
Temperature	22°C +/-2°C	22°C +/-2°C	22°C +/-2°C	22°C +/-2°C
Absorption	0,1kW	0,1kW	0,2kW	0,2kW
Refrigerant	R290	R290	R290	R290
Supply	230V/1~/50Hz	230V/1~/50Hz	230V/1~/50Hz	230V/1~/50Hz
Finished&packed unit on pallet	72 x 65 x 105 105	127 x 80 x 107 137	76 x 81 x 220 146	148 x 86 x 214 276
LxDxH (cm) /				
Weight without internal fitting(kg)	66	114	128	261